

GENERAL NOTES

1. FIRE AUTHORITY REQUIREMENTS AND CURRENT EDITION OF THE FOLLOWING STANDARDS:
- a)

STANDARD FOR THE INSTALLATION OF SPRINKLER SYSTEM

NFPA 13
- b)

STANDARD FOR THE INSTALLATION OF STAND PIPE AND HOSE SYSTEM

NFPA 14
- c)

STANDARD FOR PORTABLE FIRE EXTINGUISHER

NFPA 10
- d)

STANDARD FOR THE INSTALLATION OF STATIONARY PUMPS FOR FIRE PROTECTION

NFPA 20
- e)

STANDARD FOR WATER TANKS FOR PRIVATE FIRE PROTECTION

NFPA 22
- f)

STANDARD FOR THE INSTALLATION OF PRIVATE FIRE SERVICE MAINS AND THEIR APPURTENANCES

NFPA 24
2. HAZARD CLASSIFICATION:
- A.

LIGHT HAZARD: CHURCHES, EDUCATIONAL, HOSPITALS, INSTITUTIONAL, RESIDENTIAL, OFFICES LIBRARIES AND MUSEUMS.
- B.

ORDINARY HAZARD GROUP 1: AUTOMOBILE PARKING AND SHOWROOMS, BAKERIES, BEVERAGE MANUFACTURING, CANNERIES AND DAIRY PRODUCT MANUFACTURING.
- C.

ORDINARY HAZARD GROUP 2: CEREAL MILLS, CHEMICAL PLANTS, CONFECTIONERY PRODUCTS, DISTILLERIES, DRY CLEANERS, FEED MILLS, MACHINE SHOPS AND METAL WORKING.
3. SPRINKLER DENSITY AND SPACING:
- A.

LIGHT HAZARD (18.2m<sup>2</sup>) @ DENSITY OF 4.1 LPM/m<sup>2</sup> AREA OF SPRINKLER OPERATION.
- B.

ORDINARY HAZARD (12.1m<sup>2</sup>) @ DENSITY OF 6.1 LPM/m<sup>2</sup> (GROUP 1)  
- 8.1 LPM/m<sup>2</sup> (GROUP 2) AREA OF SPRINKLER OPERATION.
- C.

FIRE WATER RESERVE SHALL HAVE A MINIMUM OF 60 MINUTES CAPACITY.
- D.

MINIMUM AND MAXIMUM SPRINKLER SPACING SHALL BE 2.40 AND 4.60m.
4. TYPE OF SPRINKLER AND TEMPERATURE RATINGS:
- A.

HALLWAYS, OFFICE SPACE, RESIDENTIAL UNITS AND OTHERS WITH CEILING AREAS - PENDENT TYPE (STANDARD RESPONSE @ 165°F)
- B.

RESIDENTIAL UNIT AREAS WITHOUT CEILING - STANDARD OR EXTENDED SIDEWALL TYPE (STANDARD RESPONSE @ 165°F)
- C.

PARKING AREAS - UPRIGHT TYPE (STANDARD RESPONSE @ 165°F)
- D.

KITCHEN - PENDENT TYPE (QRS @ 212°F)
- E.

FIRE EXIT STAIRWELLS - EXTENDED SIDEWALL TYPE (QRS @ 165°F)
5. STANDPIPE SYSTEM AND PORTABLE FIRE EXTINGUISHER
- A.

FIRE HOSE CABINET - CLASS II WITH MAXIMUM OF 30.00m LENGTH OF FIRE HOSE AND 10lbs DRY CHEMICAL PFE.
- B.

WET STANDPIPE WITH MAXIMUM AREA COVERAGE OF 4830m<sup>2</sup>/FLR.
- C.

FLOOR CONTROL VALVE (OS & Y GATE VALVE) - ONE PER WET STANDPIPE.
- D.

15.00m MAXIMUM RADIUS OF TRAVEL DISTANCE TO FIRE EXTINGUISHER.
- E.

FE-36 TYPE FIRE EXTINGUISHER FOR ELECTRICAL ROOMS, GENSET ROOMS, TRANSFORMER ROOMS AND TELCO ROOMS.
- F.

ABC TYPE FIRE EXTINGUISHER FOR COMMON AREAS
6.

ALL EQUIPMENT AND FITTINGS ARE TO BE SUBMITTED FOR ENGINEER'S APPROVAL BEFORE PURCHASE ORDER IS ISSUED.
7. PIPES AND PIPE FITTINGS MATERIAL:
- A.

ASTM A53 GRADE "B" ERW G.I. PIPES SCH 40 (EMBEDDED PIPES)
- B.

ASTM A53 GRADE "B" ERW B.I. PIPES SCH 40 (ABOVE GROUND PIPES)
- C.

ASTM A-234 SCH 40 B.I. PIPE FITTINGS.
8.

ALL BURIED, CHASED AND CONCEALED PIPEWORK AND FITTINGS SHALL BE TESTED PRIOR TO COVERING UP AND MARKING GOOD.
9.

ALL PIPEWORK SHALL BE SUITABLY SUPPORTED BE APPROVED SUPPORT BRACKETS.
10.

ALL PIPEWORK SHALL BE PAINTED RED.
11.

ANY DISCREPANCY BETWEEN THE STANDARD LISTED IN ITEM 1 AND CONTRACT DOCUMENT MUST BE RAISED IMMEDIATELY TO ENGINEER'S ATTENTION.
12.

THE SUB-CONTRACTOR SHOULD ENSURE THAT A FINAL INSPECTION MUST BE MADE WITH THE ENGINEER.
13.

BRIGADE PERSONNELS ARE INVITED TO INSPECT AND APPROVE THE SYSTEM.
14.

ALL PIPES PASSING THROUGH FLOOR AND WALL SHALL HAVE STEEL PIPE SLEEVES ONE DIAMETER LARGER THAN THE PIPE.
15.

THE SPACE BETWEEN THE SLEEVES AND PIPES SHALL BE CAULKED WITH ROCKWOOL OR FIBERGLASS.
16.

PROVIDE LOW LEVEL SPRINKLER PROTECTION AS AND WHERE REQUIRED DUE TO CONSTRUCTION OF OTHERS M&E SERVICES, FOR EXAMPLE OTHER EXHAUST DUCT, A/C DUCTS, PIPES, ETC.
17.

PUMP PANEL, CONTROL PANEL SHALL CONFORM WITH NFPA STANDARDS.
18.

FIRE BARRIERS AS SPECIFIED.
19.

ALL PIPE CONNECTORS SHALL BE VICTAULIC OR APPROVED EQUAL.
20.

PIPE JOINTS MAY BE DEFLECTED WITHIN THE LIMITS RECOMMENDED BY THE MANUFACTURER.



LEGEND & SYMBOLS

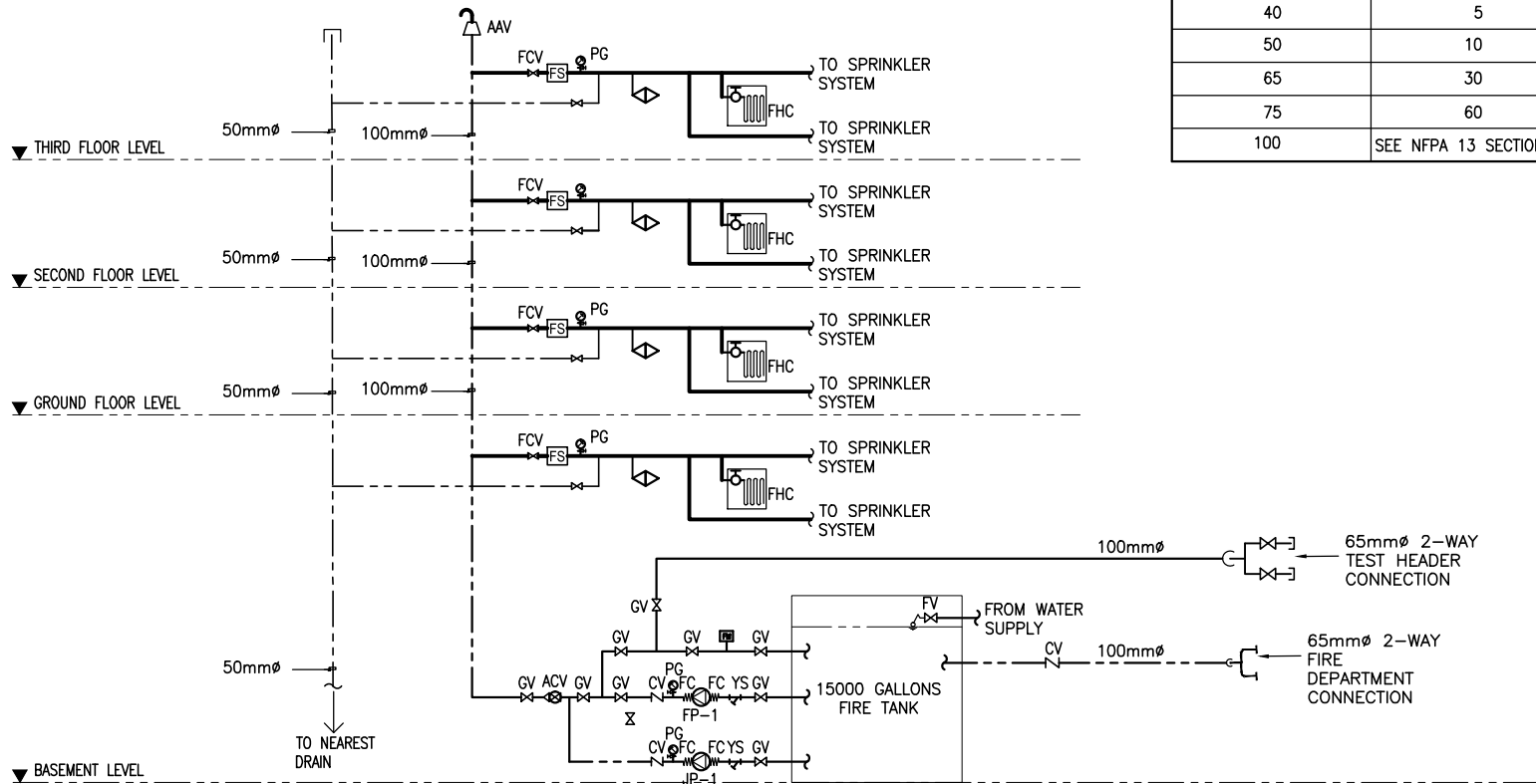
SYMBOLS	DESCRIPTIONS	SYMBOLS	DESCRIPTIONS
	BRANCHLINE		ALARM CHECK VALVE
	CROSSMAIN		FIRE PUMP
	SUPPLY PIPE		JOCKEY PUMP
	PENDENT SPRINKLER HEAD		FLOW SWITCH
	UPRIGHT SPRINKLER HEAD		CHECK VALVE
	SIDEWALL (EXT.) SPRINKLER HEAD		GATE VALVE
	SIDEWALL SPRINKLER HEAD		PRESSURE RELIEF VALVE
	ABC DRY CHEMICAL FIRE EXTINGUISHER		BUTTERFLY VALVE
	CEILING MOUNTED FIRE EXTINGUISHER		FLOOR CONTROL VALVE
	STANDPIPE RISER		ELBOW
	DRAIN PIPE/RISER		TEE
	FIRE HOSE CABINET		WYE STRAINER
	FLEXIBLE CONNECTOR		FIRE DEPARTMENT CONNECTION
	AUTOMATIC AIR VENT (SCHEMATIC)		
	FIRE HOSE CABINET (SCHEMATIC)		
	SPRINKLER HEAD (SCHEMATIC)		TEST HEADER CONNECTION

DRAWING INDEX

SHEET NO.	SHEET CONTENTS
GENERAL DRAWINGS	
FP-1	GENERAL NOTES, LEGENDS & SYMBOL, DRAWING INDEX, SCHEMATIC DIAGRAM AND EQUIPMENTS SCHEDULE
FP-2	MISCELLANEOUS DETAILS
FP-3	BASEMENT FLOOR GOLD BUILDING FIRE PROTECTION LAYOUT
FP-4	GROUND FLOOR GOLD BUILDING FIRE PROTECTION LAYOUT
FP-5	SECOND FLOOR GOLD BUILDING FIRE PROTECTION LAYOUT
FP-6	THIRD FLOOR GOLD BUILDING FIRE PROTECTION LAYOUT
FP-7	COPPER BUILDING FIRE PROTECTION LAYOUT, SCHEMATIC DIAGRAM AND EQUIPMENT SCHEDULE
FP-8	GROUND FLOOR STEEL BUILDING FIRE PROTECTION LAYOUT
FP-9	SECOND FLOOR STEEL BUILDING FIRE PROTECTION LAYOUT
FP-10	STEEL BUILDING SCHEMATIC DIAGRAM AND EQUIPMENT SCHEDULE

EQUIPMENT SCHEDULE

PUMP SCHEDULE											
EQUIPMENT NO.	QTY.	DESCRIPTION	CAPACITY (GPM)	TDH (M)	MOTOR POWER (HP)	ELECTRICAL CHAR.			CUT-IN PRESSURE	CUT-OUT PRESSURE	LOCATION
						VOLTS	PHASE	Hz			
	1	FIRE PUMP	500	60	40	380	3	60	70 PSI	85 PSI	GOLD BUILDING FIRE PUMP ROOM
	1	JOCKEY PUMP	20	60	3	230	1	60	75 PSI	85 PSI	GOLD BUILDING FIRE PUMP ROOM



1  
FP-1  
FIRE PROTECTION SCHEMATIC DIAGRAM  
SCALE  
NTS

ABBREVIATIONS

ABBREVIATIONS	DESCRIPTIONS	ABBREVIATIONS	DESCRIPTIONS
AAV	AUTOMATIC AIR VENT	mm	MILLIMETER
ACV	ALARM CHECK VALVE	NTS	NOT TO SCALE
CM	CROSS MAIN	O.D.	OUTSIDE DIAMETER
DIA. / ø	DIAMETER	Pa	PASCAL
DWG.	DRAWING	T/A	TO ABOVE
FHC	FIRE HOSE CABINET	T/B	TO BELOW
FP	FIRE PUMP	ZCV	ZONE CONTROL VALVE
FS	FLOW SWITCH		
F/A	FROM ABOVE		
FCV	FLOOR CONTROL VALVE		
Go.	GAUGE		
G.I.	GALVANIZED IRON		
ID	INTERNAL DIAMETER		
JP	JOCKEY PUMP		

LIGHT HAZARD	
PIPE NOMINAL SIZE (mm)	MAX. NUMBER OF SPRINKLERS TO BE FED BY PIPE OF SIZE LISTED
25	2
32	3
40	5
50	10
65	30
75	60
100	SEE NFPA 13 SECTION 8.2

ORDINARY HAZARD	
PIPE NOMINAL SIZE (mm)	MAX. NUMBER OF SPRINKLERS TO BE FED BY PIPE OF SIZE LISTED
25	2
32	3
40	4
50	10
65	20
75	40
100	100
125	160
150	275
200	SEE NFPA 13 SECTION 8.2



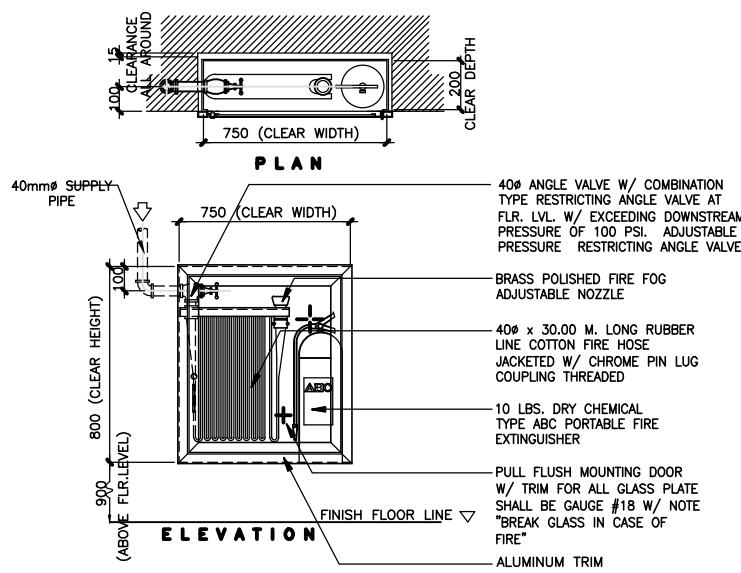
GIBMA Engineering Services

Design - Construction - Project Management - Surveys

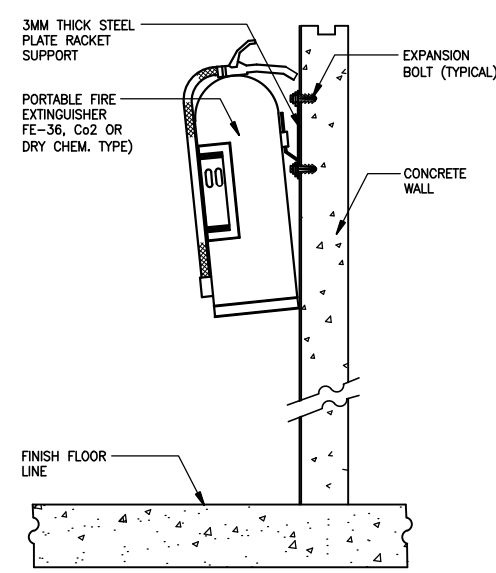
93 Kalikasan Street Karangalan Village Phase 2A, Dela Paz, Pasig City 1611  
Tel. No.: 682 7114 Fax. No.: 682 8467 Cellphone No.: 0920 9226441  
URL: www.gibma.com E-mail: gibma2003@yahoo.com

PROFESSIONAL MECHANICAL ENGINEER:			PROJECT TITLE :			OWNER :			DATE :	REVISION :	DESCRIPTION:	DESIGNED BY :	MJA/ENG	SHEET CONTENTS :		DRAWING NO. :					
LENUEL P. JARAMILLA, PME			DESIGN OF FIRE FIGHTING SYSTEM FOR MIRDC BUILDINGS			METAL INDUSTRY RESEARCH AND DEVELOPMENT CENTER (MIRDC)						CADD BY :	MJA	GENERAL NOTES LEGENDS & SYMBOLS SCHEMATIC DIAGRAM EQUIPMENT SCHEDULE DRAWING INDEX		FP - 1					
REG. NO. : 004367		PTR NO. : 1365493										DATE :									SHEET NO. :
DATE : MAY. 08, 2020		ISSUED ON : JAN. 12, 2018							LOCATION :			ADDRESS :							CHECKED BY :	LPJ	1 / 10
TIN NO : 200-409-818		ISSUED AT : BACOOR CITY		GEN. SANTOS AVE., BICUTAN, TAGUIG CITY, METRO MANILA			GEN. SANTOS AVE., BICUTAN, TAGUIG CITY, METRO MANILA						APPROVED BY :			GBM					
													DATE :								

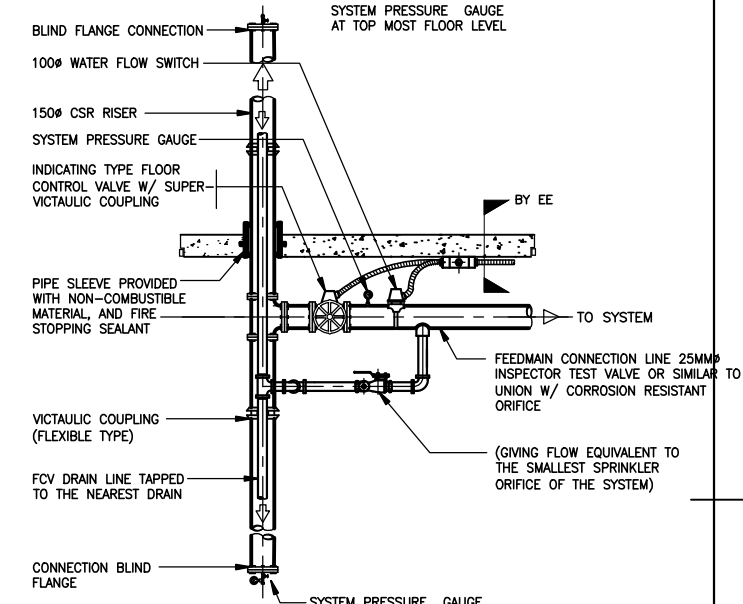




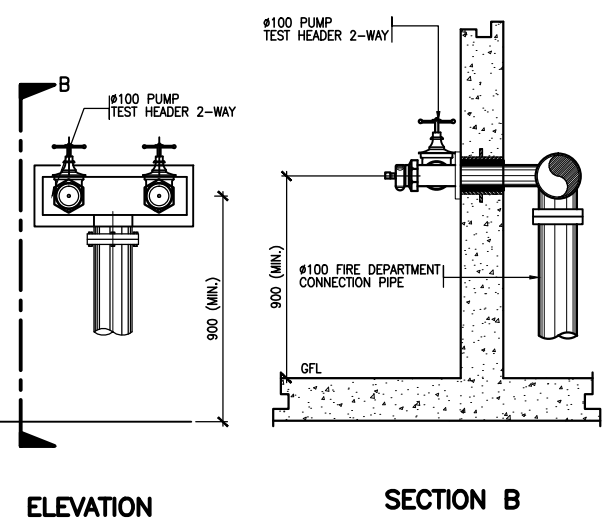
1 FIRE HOSE CABINET DETAIL  
FP-2 SCALE NTS



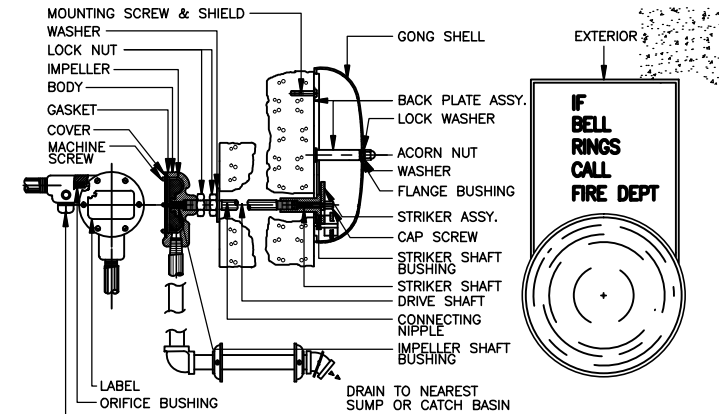
2 PORTABLE FIRE EXTINGUISHER  
FP-2 SCALE NTS



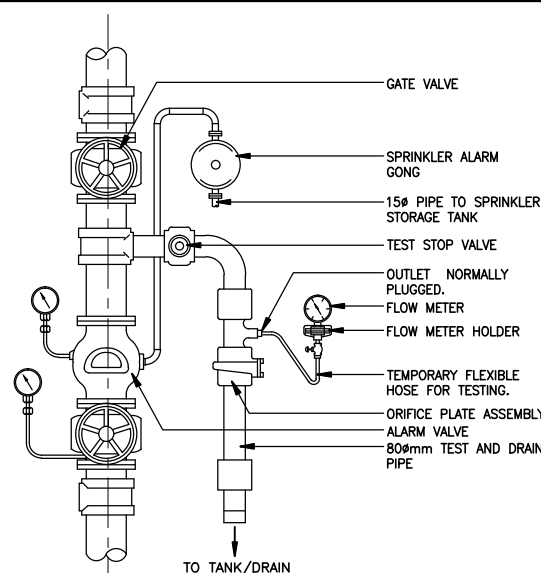
3 CONTROL VALVE ASSEMBLY  
FP-2 SCALE NTS



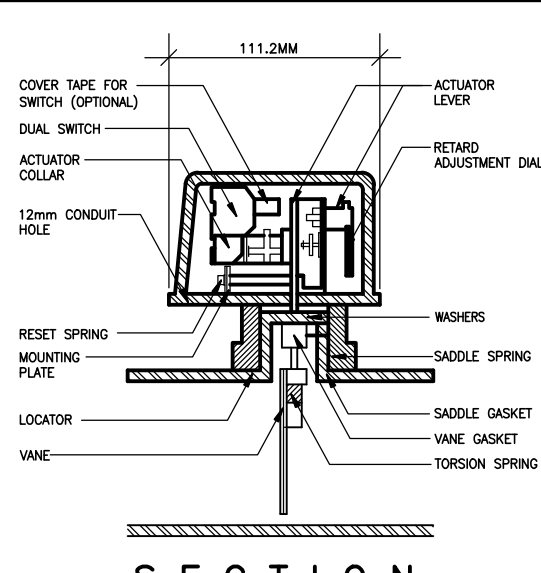
4 2-WAY TEST HEADER DETAIL  
FP-2 SCALE NTS



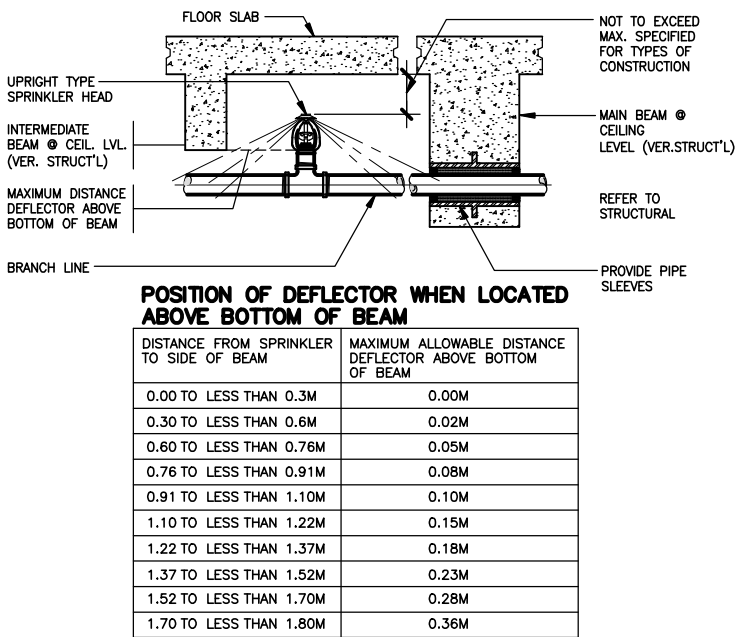
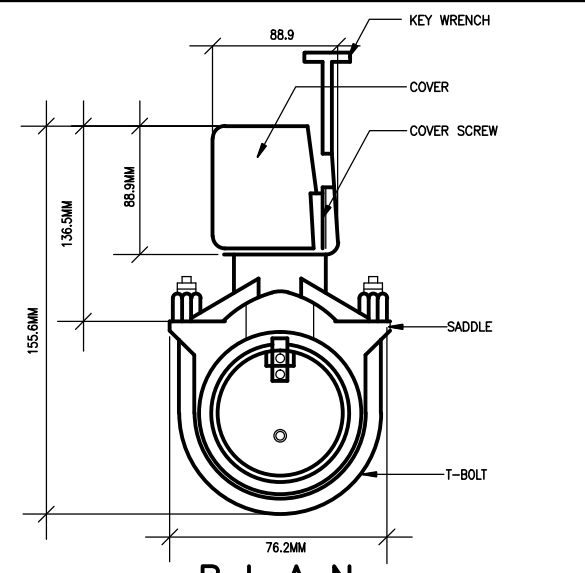
5 ALARM MOTOR GONG DETAIL  
FP-2 SCALE NTS



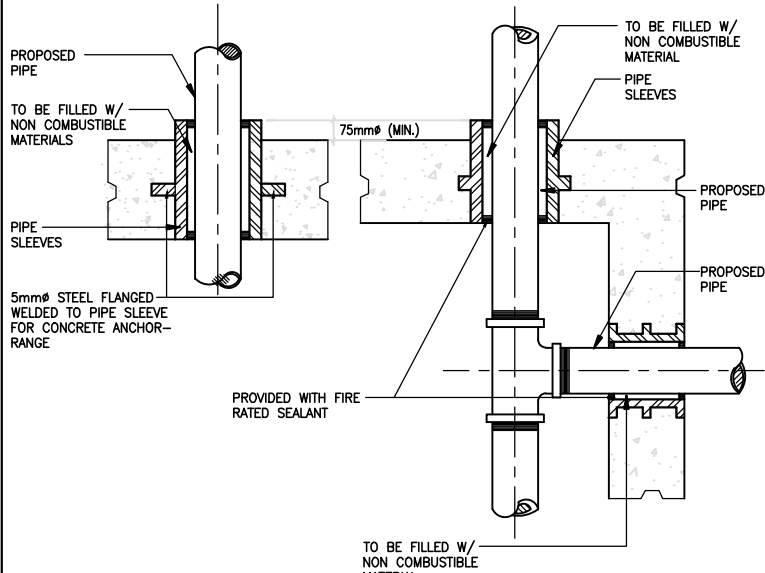
6 ALARM CHECK VALVE DETAIL  
FP-2 SCALE NTS



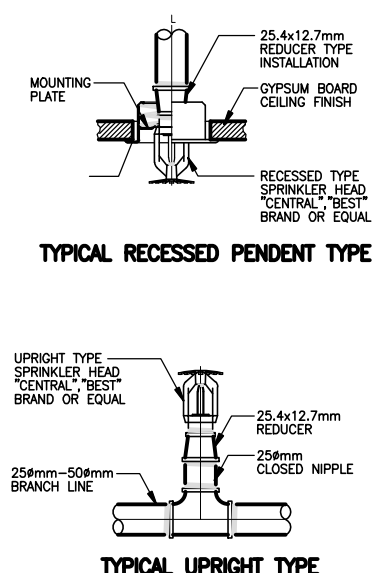
7 WATER FLOW SWITCH  
FP-2 SCALE NTS



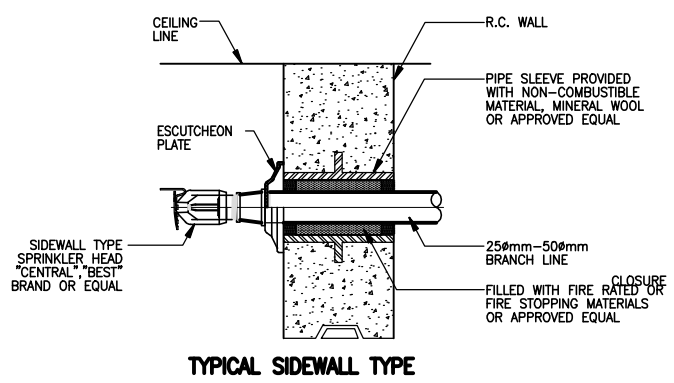
8 SPRINKLER HEAD DETAILS  
FP-2 SCALE NTS



9 DETAIL OF PIPE SLEEVES  
FP-2 SCALE NTS



10 DETAIL OF SPRINKLER HEADS  
FP-2 SCALE NTS



**GIBMA Engineering Services**  
Design - Construction - Project Management - Surveys

93 Kalikasan Street Karangalan Village Phase 2A, Dela Paz, Pasig City 1611  
Tel. No.: 682 7114 Fax. No.: 682 8467 Cellphone No.: 0920 9226441  
URL: www.gibma.com E-mail: gibma2003@yahoo.com

PROFESSIONAL MECHANICAL ENGINEER:	
LENUEL P. JARAMILLA, PME	
REG. NO. :	004367
PTR NO. :	1365493
DATE :	MAY. 08, 2020
ISSUED ON :	JAN. 12, 2018
TIN NO. :	200-409-818
ISSUED AT :	BACOR CITY

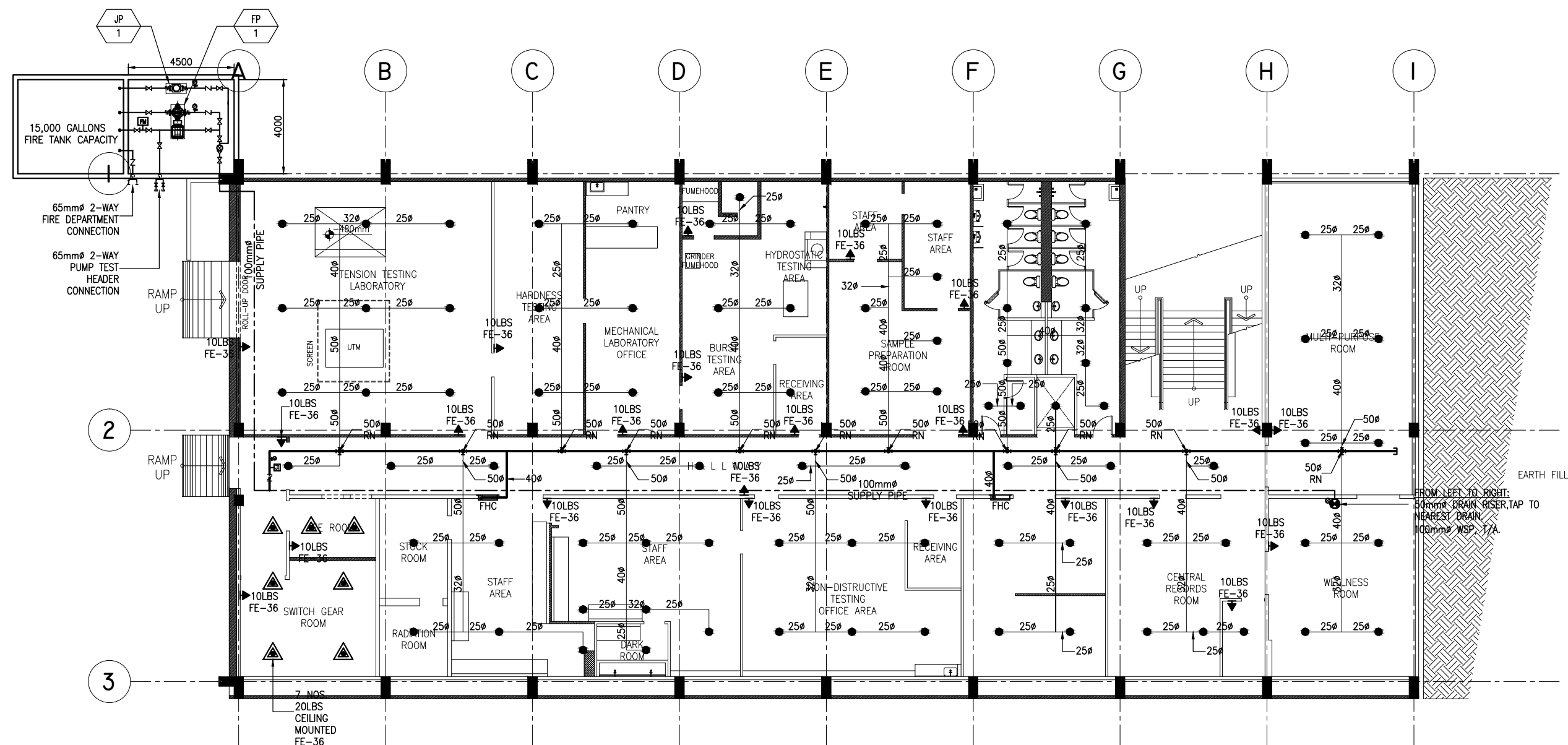
PROJECT TITLE :	
DESIGN OF FIRE FIGHTING SYSTEM FOR MIRC BUILDINGS	
LOCATION :	
GEN. SANTOS AVE., BICUTAN, TAGUIG CITY, METRO MANILA	

OWNER :	
METAL INDUSTRY RESEARCH AND DEVELOPMENT CENTER (MIRDC)	
ADDRESS :	
GEN. SANTOS AVE., BICUTAN, TAGUIG CITY, METRO MANILA	

DATE :		REVISION :		DESCRIPTION :		DESIGNED BY :	MJA/ENG	SHEET CONTENTS :		DRAWING NO. :	FP - 2
						CADD BY :	MJA				
						DATE :					
						CHECKED BY :	LPJ				
						APPROVED BY :	GBM				
						DATE :					

MISCELLANEOUS DETAILS	
2 / 10	





1  
FP-3  
SCALE

**BASEMENT FLOOR FIRE PROTECTION LAYOUT**

1:150M

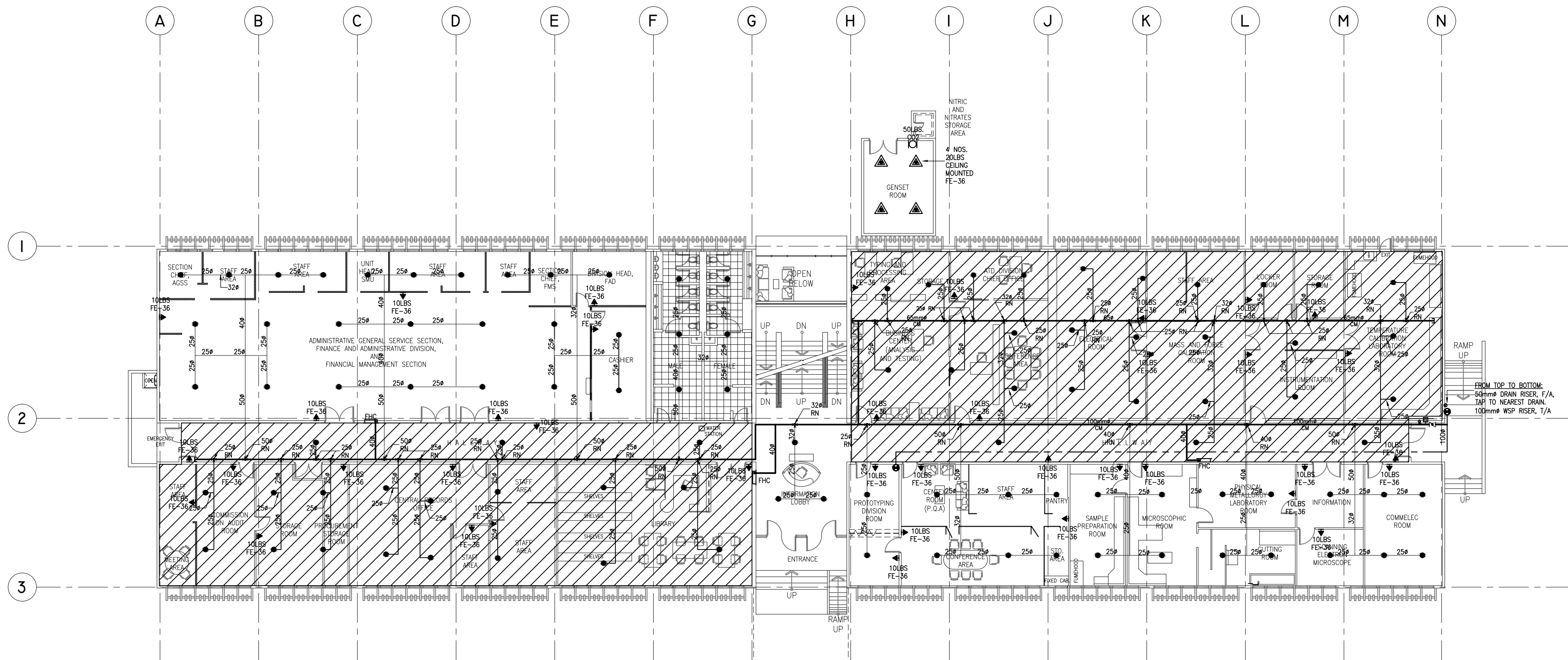


**GIBMA Engineering Services**  
Design - Construction - Project Management - Surveys

93 Kalikasan Street Karangalan Village Phase 2A, Dela Paz, Pasig City 1611  
Tel. No.: 682 7114 Fax. No.: 682 8467 Cellphone No.: 0920 9226441  
URL: www.gibma.com E-mail: gibma2003@yahoo.com

PROFESSIONAL MECHANICAL ENGINEER:		PROJECT TITLE:	OWNER:	DATE:	REVISION:	DESCRIPTION:	DESIGNED BY:	MJA/ENG	SHEET CONTENTS:	DRAWING NO.:
LENUEL P. JARAMILLA, PME		DESIGN OF FIRE FIGHTING SYSTEM FOR MIRDC BUILDINGS	METAL INDUSTRY RESEARCH AND DEVELOPMENT CENTER (MIRDC)				CADD BY:	MJA	GOLD BUILDING	<b>FP - 3</b>
REG. NO.:	004367	PTR NO.:	1365493				DATE:			SHEET NO.:
DATE:	MAY. 08, 2020	ISSUED ON:	JAN. 12, 2018	LOCATION:	ADDRESS:		CHECKED BY:	LPJ	BASEMENT FLOOR FIRE PROTECTION LAYOUT	
TIN NO.:	200-409-818	ISSUED AT:	BACOR CITY	GEN. SANTOS AVE., BICUTAN, TAGUIG CITY, METRO MANILA	GEN. SANTOS AVE., BICUTAN, TAGUIG CITY, METRO MANILA		APPROVED BY:	GBM		<b>3 / 10</b>
							DATE:			





1  
FP-4  
SCALE 1:150M



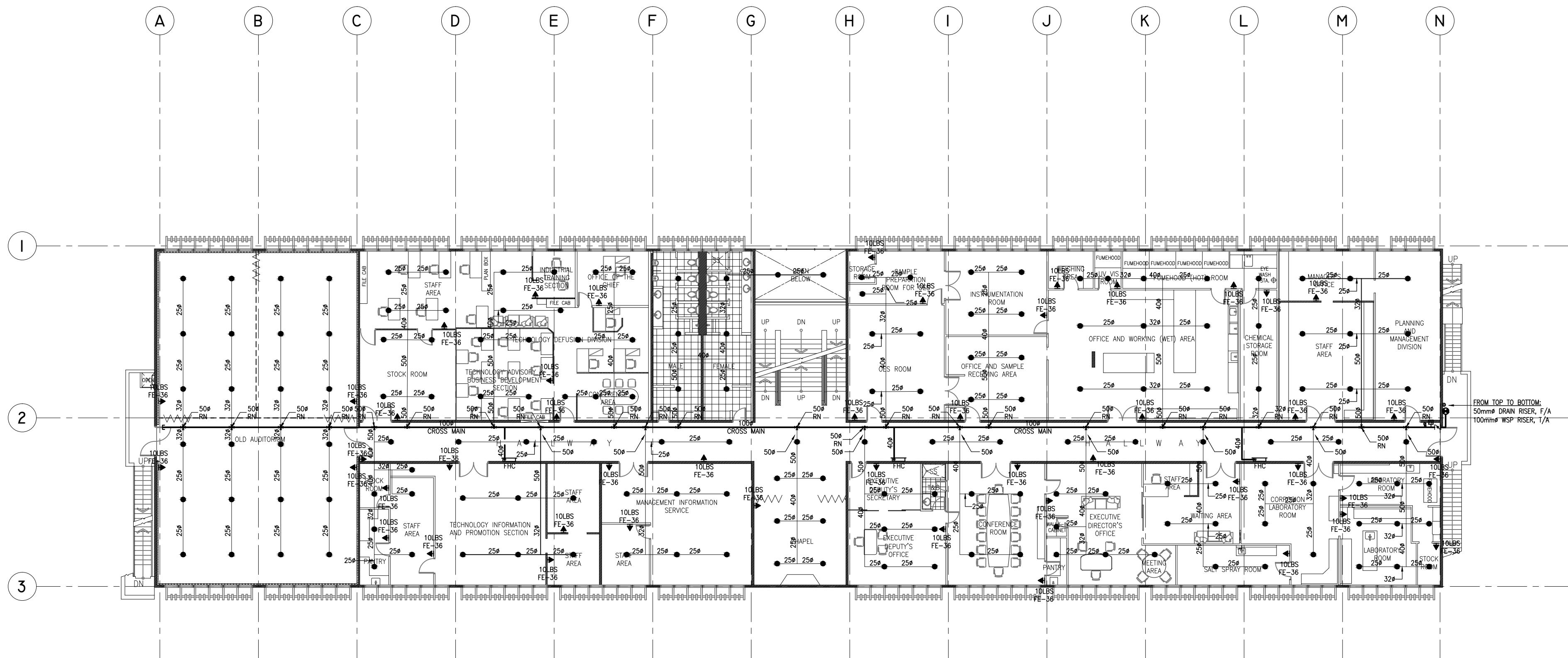
# GIBMA Engineering Services

Design - Construction - Project Management - Surveys

93 Kalikasan Street Karangalan Village Phase 2A, Dela Paz, Pasig City 1611  
Tel. No.: 682 7114 Fax. No.: 682 8467 Cellphone No.: 0920 9226441  
URL: www.gibma.com E-mail: gibma2003@yahoo.com

PROFESSIONAL MECHANICAL ENGINEER:		PROJECT TITLE:	OWNER:	DATE:	REVISION:	DESCRIPTION:	DESIGNED BY:	MJA/ENG	SHEET CONTENTS:	DRAWING NO.:
LENUEL P. JARAMILLA, PME		DESIGN OF FIRE FIGHTING SYSTEM FOR MIRCDC BUILDINGS	METAL INDUSTRY RESEARCH AND DEVELOPMENT CENTER (MIRCDC)				CADD BY:	MJA	GOLD BUILDING	FP - 4
REG. NO.:	004367	PTR NO.:	1365493				DATE:			
DATE:	MAY. 08, 2020	ISSUED ON:	JAN. 12, 2018	LOCATION:	ADDRESS:		CHECKED BY:	LPJ	GROUND FLOOR FIRE PROTECTION LAYOUT	SHEET NO.:
TIN NO.:	200-409-818	ISSUED AT:	BACOR CITY	GEN. SANTOS AVE., BICUTAN, TAGUIG CITY, METRO MANILA	GEN. SANTOS AVE., BICUTAN, TAGUIG CITY, METRO MANILA		APPROVED BY:	GBM		4 / 10
							DATE:			





1  
FP-5  
SECOND FLOOR FIRE PROTECTION LAYOUT  
SCALE 1:150M



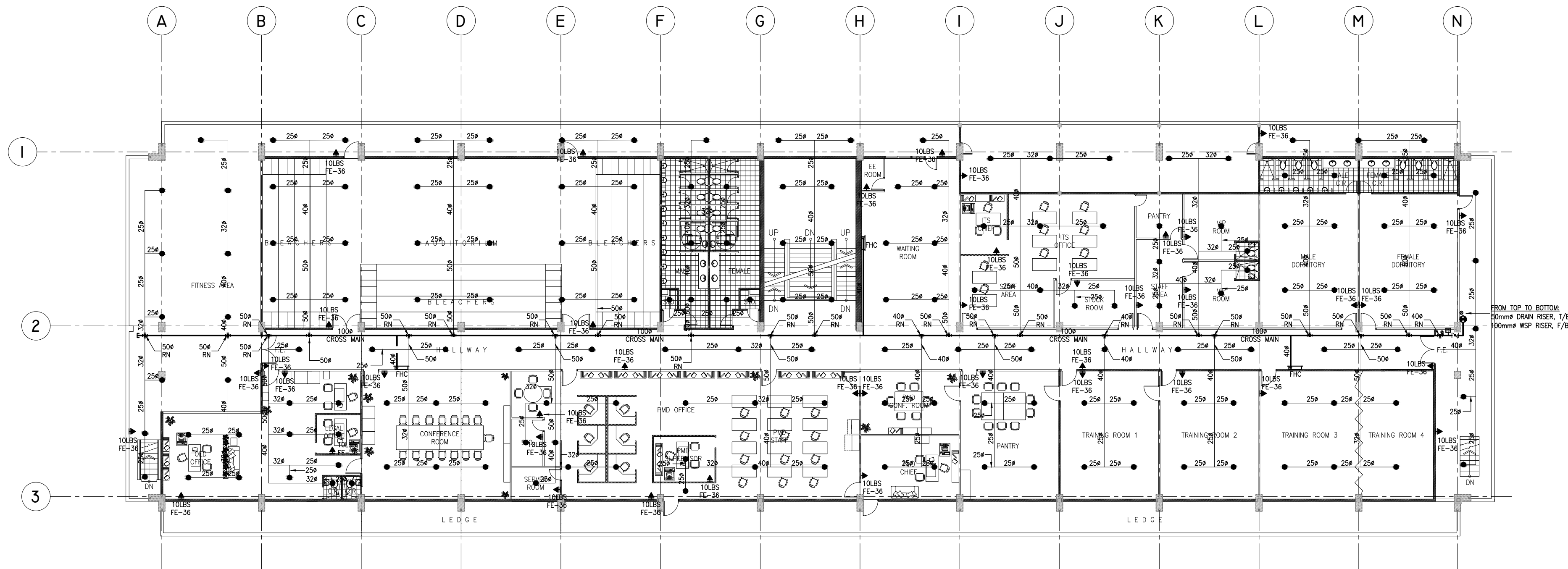
## GIBMA Engineering Services

Design - Construction - Project Management - Surveys

93 Kalikasan Street Karangalan Village Phase 2A, Dela Paz, Pasig City 1611  
Tel. No.: 682 7114 Fax. No.: 682 8467 Cellphone No.: 0920 9226441  
URL: www.gibma.com E-mail: gibma2003@yahoo.com

PROFESSIONAL MECHANICAL ENGINEER:		PROJECT TITLE :	OWNER :	DATE :	REVISION :	DESCRIPTION:	DESIGNED BY :	MJA/ENG	SHEET CONTENTS :	DRAWING NO. :
LENUEL P. JARAMILLA, PME		DESIGN OF FIRE FIGHTING SYSTEM FOR MIRD C BUILDINGS	METAL INDUSTRY RESEARCH AND DEVELOPMENT CENTER (MIRDC)				CADD BY :	MJA	GOLD BUILDING	<b>FP - 5</b>
REG. NO. :	004367	PTR NO. :	1365493				DATE :			
DATE :	MAY. 08, 2020	ISSUED ON :	JAN. 12, 2018	LOCATION :	ADDRESS :		CHECKED BY :	LPJ	SECOND FLOOR FIRE PROTECTION LAYOUT	SHEET NO. :
TIN NO. :	200-409-818	ISSUED AT :	BACOR CITY	GEN. SANTOS AVE., BICUTAN, TAGUIG CITY, METRO MANILA	GEN. SANTOS AVE., BICUTAN, TAGUIG CITY, METRO MANILA		APPROVED BY :	GBM		<b>5 / 10</b>
							DATE :			





1  
FP-6  
THIRD FLOOR FIRE PROTECTION LAYOUT  
SCALE 1:150M

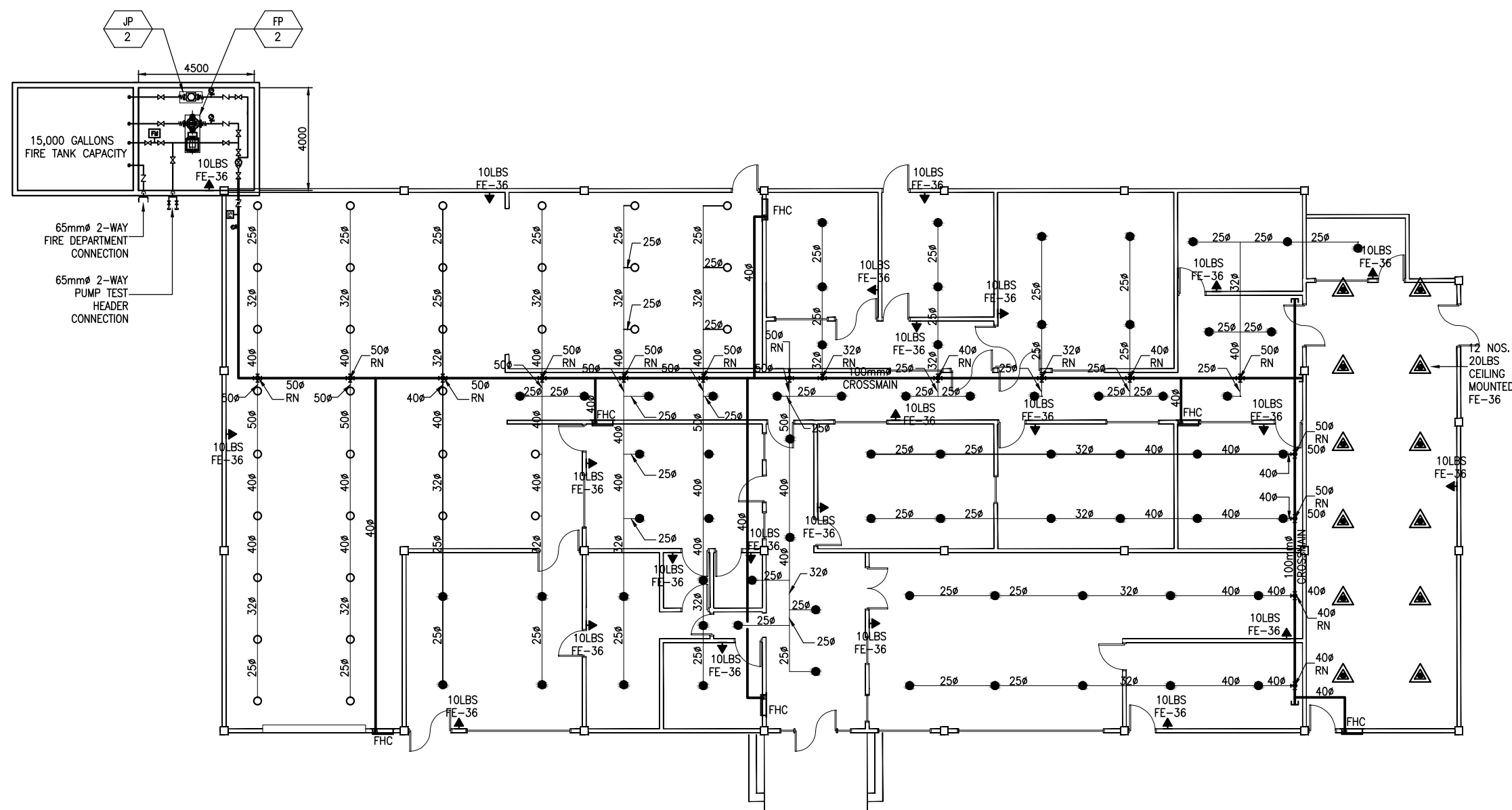


**GIBMA Engineering Services**  
Design - Construction - Project Management - Surveys

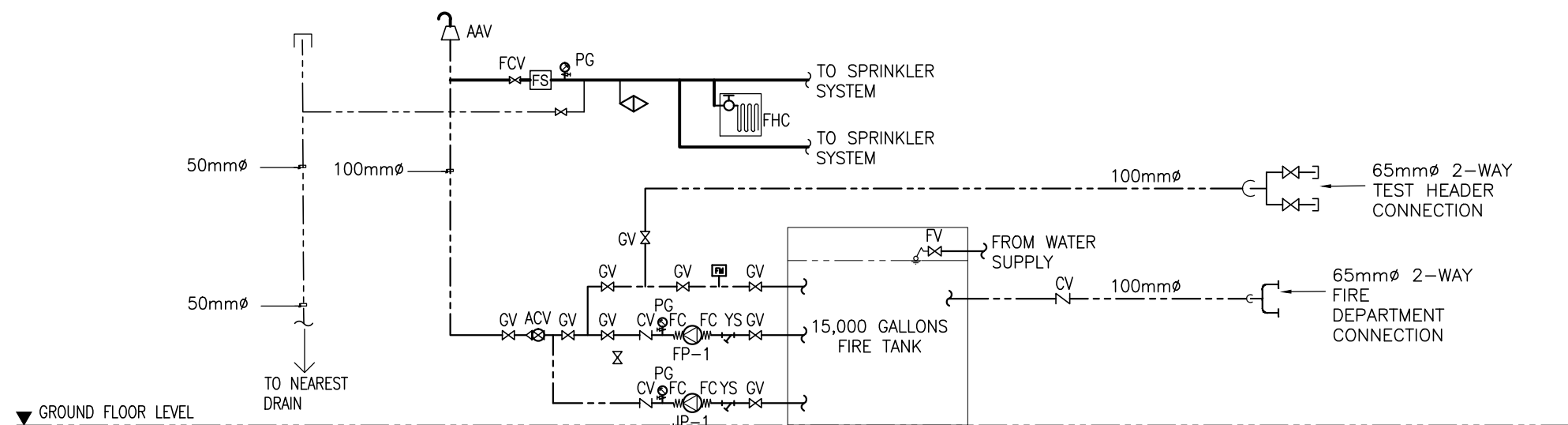
93 Kalikasan Street Karangalan Village Phase 2A, Dela Paz, Pasig City 1611  
Tel. No.: 682 7114 Fax. No.: 682 8467 Cellphone No.: 0920 9226441  
URL: www.gibma.com E-mail: gibma2003@yahoo.com

PROFESSIONAL MECHANICAL ENGINEER:		PROJECT TITLE:	OWNER:	DATE:	REVISION:	DESCRIPTION:	DESIGNED BY:	MJA/ENG	SHEET CONTENTS:	DRAWING NO.:
LENUEL P. JARAMILLA, PME		DESIGN OF FIRE FIGHTING SYSTEM FOR MIRD C BUILDINGS	METAL INDUSTRY RESEARCH AND DEVELOPMENT CENTER (MIRDC)				CADD BY:	MJA	GOLD BUILDING	<b>FP - 6</b>
REG. NO.:	004367	PTR NO.:	1365493				DATE:		THIRD FLOOR FIRE PROTECTION LAYOUT	SHEET NO.:
DATE:	MAY. 08, 2020	ISSUED ON:	JAN. 12, 2018	LOCATION:	ADDRESS:		CHECKED BY:	LPJ		<b>6 / 10</b>
TIN NO.:	200-409-818	ISSUED AT:	BACOR CITY	GEN. SANTOS AVE., BICUTAN, TAGUIG CITY, METRO MANILA	GEN. SANTOS AVE., BICUTAN, TAGUIG CITY, METRO MANILA		APPROVED BY:	GBM		
							DATE:			





1 FIRE PROTECTION LAYOUT  
FP-7 SCALE 1:150M



2 FIRE PROTECTION SCHEMATIC DIAGRAM  
FP-7 SCALE NTS

## EQUIPMENT SCHEDULE

PUMP SCHEDULE											
EQUIPMENT NO.	QTY.	DESCRIPTION	CAPACITY (GPM)	TDH (M)	MOTOR POWER (HP)	ELECTRICAL CHAR.			CUT-IN PRESSURE	CUT-OUT PRESSURE	LOCATION
						VOLTS	PHASE	Hz			
<div>FP 2</div>	1	FIRE PUMP	500	31	20	380	3	60	30 PSI	45 PSI	COPPER BUILDING FIRE PUMP ROOM
<div>JP 2</div>	1	JOCKEY PUMP	20	60	1.5	230	1	60	35 PSI	45 PSI	COPPER BUILDING FIRE PUMP ROOM



### GIBMA Engineering Services

Design - Construction - Project Management - Surveys

93 Kalikasan Street Karangalan Village Phase 2A, Dela Paz, Pasig City 1611  
Tel. No.: 682 7114 Fax. No.: 682 8467 Cellphone No.: 0920 9226441  
URL: www.gibma.com E-mail: gibma2003@yahoo.com

PROFESSIONAL MECHANICAL ENGINEER:

LENUEL P. JARAMILLA, PME

REG. NO.: 004367

PTR NO.: 1365493

DATE: MAY. 08, 2020

ISSUED ON: JAN. 12, 2018

TIN NO.: 200-409-818

ISSUED AT: BACOOR CITY

PROJECT TITLE:

DESIGN OF FIRE FIGHTING SYSTEM  
FOR MIRDG BUILDINGS

LOCATION:

GEN. SANTOS AVE., BICUTAN, TAGUIG CITY, METRO MANILA

OWNER:

METAL INDUSTRY RESEARCH AND  
DEVELOPMENT CENTER (MIRDG)

ADDRESS:

GEN. SANTOS AVE., BICUTAN, TAGUIG CITY, METRO MANILA

DATE:

REVISION:

DESCRIPTION:

DESIGNED BY:

MJA/ENG

CADD BY:

MJA

DATE:

CHECKED BY:

LPJ

APPROVED BY:

GBM

DATE:

SHEET CONTENTS:

COPPER BUILDING

FIRE PROTECTION LAYOUT,  
SCHEMATIC DIAGRAM &  
EQUIPMENT SCHEDULE

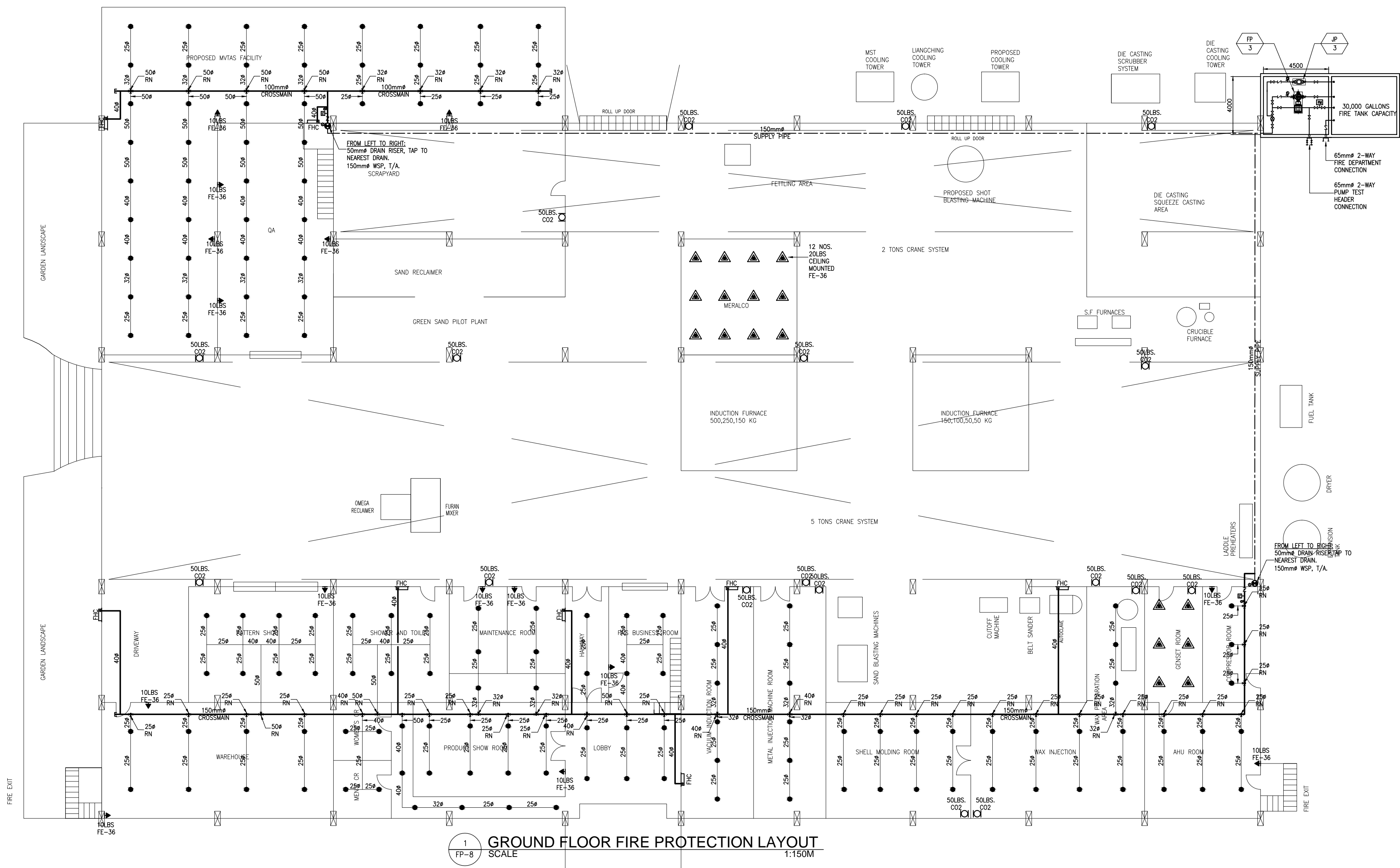
DRAWING NO.:

FP - 7

SHEET NO.:

7 / 10





## GIBMA Engineering Services

Design - Construction - Project Management - Surveys

93 Kalikasan Street Karangalan Village Phase 2A, Dela Paz, Pasig City 1611  
Tel. No.: 682 7114 Fax. No.: 682 8467 Cellphone No.: 0920 9226441  
URL: www.gibma.com E-mail: gibma2003@yahoo.com

PROFESSIONAL MECHANICAL ENGINEER:		PROJECT TITLE :		OWNER :		DATE :		REVISION :		DESCRIPTION:		DESIGNED BY :		MJA/ENG		SHEET CONTENTS :		DRAWING NO. :	
LENUEL P. JARAMILLA, PME		DESIGN OF FIRE FIGHTING SYSTEM FOR MIRDC BUILDINGS		METAL INDUSTRY RESEARCH AND DEVELOPMENT CENTER (MIRDC)								CADD BY :		MJA		STEEL BUILDING		<b>FP - 8</b>	
REG. NO. :	004367	PTR NO. :	1365493	LOCATION :		ADDRESS :						DATE :				GROUND FLOOR FIRE PROTECTION LAYOUT		SHEET NO. :	
DATE :	MAY. 08, 2020	ISSUED ON :	JAN. 12, 2018	GEN. SANTOS AVE., BICUTAN, TAGUIG CITY, METRO MANILA		GEN. SANTOS AVE., BICUTAN, TAGUIG CITY, METRO MANILA						CHECKED BY :		LPJ				<b>8 / 10</b>	
TIN NO :	200-409-818	ISSUED AT :	BACOR CITY									APPROVED BY :		GBM					
												DATE :							

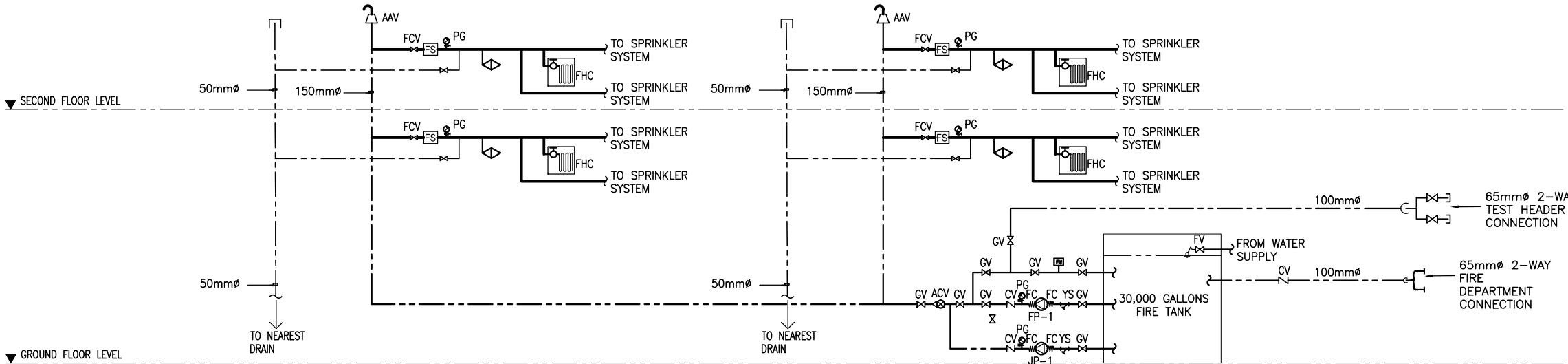






EQUIPMENT SCHEDULE

PUMP SCHEDULE											
EQUIPMENT NO.	QTY.	DESCRIPTION	CAPACITY (GPM)	TDH (M)	MOTOR POWER (HP)	ELECTRICAL CHAR.			CUT-IN PRESSURE	CUT-OUT PRESSURE	LOCATION
						VOLTS	PHASE	Hz			
FP 3	1	FIRE PUMP	500	40	20	380	3	60	42	57	STEEL BUILDING FIRE PUMP ROOM
JP 3	1	JOCKEY PUMP	20	40	1.5	230	1	60	47	57	STEEL BUILDING FIRE PUMP ROOM



1  
FP-10  
SCALE  
FIRE PROTECTION SCHEMATIC DIAGRAM  
NTS



**GIBMA Engineering Services**  
Design - Construction - Project Management - Surveys

93 Kalikasan Street Karangalan Village Phase 2A, Dela Paz, Pasig City 1611  
Tel. No.: 682 7114 Fax. No.: 682 8467 Cellphone No.: 0920 9226441  
URL: www.gibma.com E-mail: gibma2003@yahoo.com

PROFESSIONAL MECHANICAL ENGINEER:		PROJECT TITLE :	OWNER :	DATE :	REVISION :	DESCRIPTION:	DESIGNED BY :	MJA/ENG	SHEET CONTENTS :	DRAWING NO. :
LENUEL P. JARAMILLA, PME		DESIGN OF FIRE FIGHTING SYSTEM FOR MIRDC BUILDINGS	METAL INDUSTRY RESEARCH AND DEVELOPMENT CENTER (MIRDC)				CADD BY :	MJA	SCHEMATIC DIAGRAM EQUIPMENT SCHEDULE	<b>FP - 10</b>
REG. NO. :	004367	PTR NO. :	1365493				DATE :			SHEET NO. :
DATE :	MAY. 08, 2020	ISSUED ON :	JAN. 12, 2018				CHECKED BY :	LPJ		
TIN NO :	200-409-818	ISSUED AT :	BACOOR CITY				APPROVED BY :	GBM		<b>10 / 10</b>
		LOCATION :	GEN. SANTOS AVE., BICUTAN, TAGUIG CITY, METRO MANILA	ADDRESS :		GEN. SANTOS AVE., BICUTAN, TAGUIG CITY, METRO MANILA				